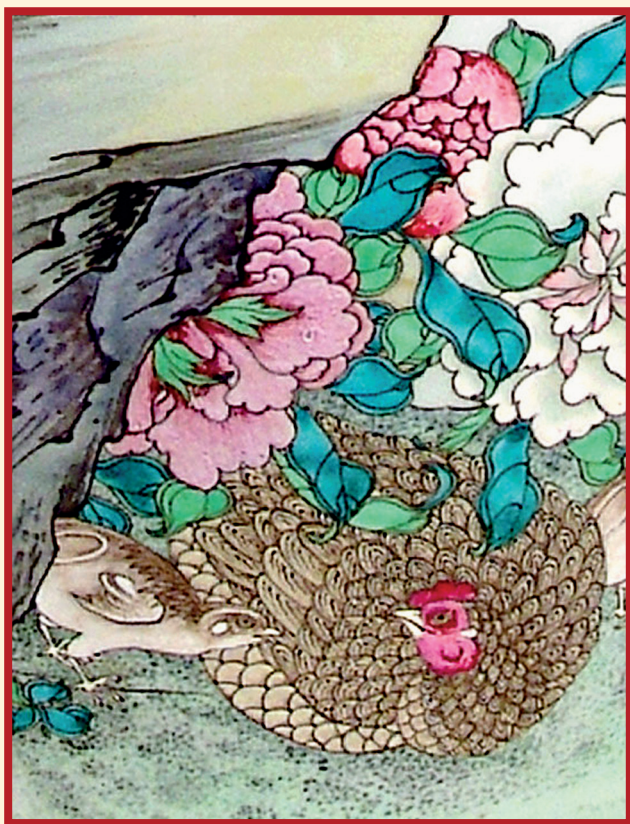


Ralph M. Chait Galleries INC.

CHINESE ART

ESTABLISHED 1910



Chinese Porcelain and Works of Art

SPRING EXHIBITION

2017

RALPH M. CHAIT GALLERIES
Chinese Porcelain and Works of Art
SPRING EXHIBITION
2017



1

1. Chinese Unglazed Pottery Figure of a Bactrian Camel
NORTHERN WEI DYNASTY, CA: 7TH CENTURY
Standing foursquare upon a rectangular base. Caparisoned and holding tent posts that extend from the sides. The face with pleasing features and fine detailing.
Height: 9 5/8 inches (24.7 cm.)
TL tested.
2. Chinese Unglazed Pottery Figure of a Warrior
TANG DYNASTY, AD 618-907
Posed standing with hands resting upon where once was a sword. Dressed in plated armor.
Height: 22 1/2 inches (57.1 cm.)
With wood base.
TL tested.



3

3. Set of Two Painted and Gilded Chinese Stucco Figures of a Deva and Attendant

MING DYNASTY, CA. 16TH CENTURY

Finely modeled in the three-quarter round. The Deva dressed in elaborate robes and wearing a beaded diadem; the Attendant, holding a draped dish with Sacred Fruit.

Heights: 14 $\frac{3}{4}$ and 12 $\frac{1}{2}$ inches (36.5 and 31.7 cm.)

Ex: Private American Collection

Ex: Ralph M. Chait Galleries

Compare with similar examples in the Guanyin Hall in Changzhi, Shanxi Province.

With fitted wood bases.

4. Chinese Ying Stone Scholar's Rock

CA. 18TH/ 19TH CENTURY

Of broad form with characteristic dimpled surface and light gray color.

With carved wood base.

Height with base: 22 inches (55.9 cm.)

Ex: Private New York Collection



4

5. Chinese Scholar's Rock, Lingbi Type,

Of abstract form perhaps suggesting a rampant dragon; with openings contoured surface.

Intricately mounted upon a carved wood base.

Greatest height: 8 inches (20.2 cm.)

Length: 6 $\frac{3}{4}$ inches (17.2 cm.)

6. Chinese Scholar's Rock, Lingbi Type

Of extraordinary mountainous form with multiple peaks and open areas.

Intricately mounted upon a carved wood base.

Height: 6 $\frac{1}{2}$ inches (16.5 cm.)

Length: 6 $\frac{1}{2}$ inches (16.5 cm.)



7

7. Pair of Chinese Bronze Figures of Daoist Immortals
 MING DYNASTY, CA: 16TH/ EARLY 17TH CENTURY
 Finely modeled in the full round. The figures are dressed in long robes; their faces, with pleasant expressions.
 With vestiges of lacquer and gilt decoration.
 Height: 10 ½ inches (26.7 cm.)
 With revolving fitted bases.



8

8. Chinese Carved Jade Archaistic Vase and Cover
 CA: 19TH CENTURY
 Stylistically based upon an archaic bronze form. The color of the jade is meant to imitate the color of the bronze.
 Height: 9 inches (22.8 cm.)



9/10



11

- 9/10. Two Chinese Cinnabar Lacquer Boxes
QIANLONG PERIOD, CA: MID-18TH CENTURY
Decorated with Sacred Fruit; the boxes of corresponding form.
Length: 4 ¼ inches (10.4 cm.)
Ex: Private New York Collection



12

11. Chinese Cizhou Glazed Figure of Budai
MING DYNASTY, CA: 15TH/ 16TH CENTURY
Posed in a position of "royal ease" and leaning against a sack.
His face, with friendly expression.
A rare model to find in cizhou ware.
With fitted wood base.
Height with base: 7 ¾ inches (19.3 cm.)
Ex: Private American Collection
Acquired in Italy, 1950's
12. Fine Large Chinese Blue and White Kraak Porcelain Charger
MING, CA: LATE 16TH/ 17TH CENTURY
Thickly potted and of broad rounded form with flanged rim and barbed rim. Decorated in the center with four Sacred Cranes among rui form clouds, all within a brocaded border. The sides and rim with reserves of flowers and Precious Things, separated by narrow dot patterned smaller reserves. The underside with stylized reserves with lion head designs. The decoration is particularly finely painted in very deep underglaze blue with great clarity and "heap and piled" effect best known on early Ming blue and white. The subject to our knowledge is quite rare and similar examples of arguably comparable quality may be found on Ming Official/ Imperial ware.
Diameter: 19 ½ inches (49.5 cm.)
Ex: Private American Collection



13

13. Fine Chinese Wucai Glazed Porcelain Vase and Cover
TRANSITIONAL/ SHUNZHI PERIOD, CA: MID-17TH CENTURY

Decorated with children and Court ladies in a palace garden celebrating the New Year.

Height with cover: 16 inches (40.6 cm.)

14. Chinese Blue and White Porcelain Plate
KANGXI PERIOD, AD 1662-1722

Finely decorated with a large basket of flowers.

Diameter: 16 ½ inches (41.8 cm.)

Similar example: Landesmuseum, Kassel.



14

15. Pair of Large Chinese Blue and White Porcelain Rouleau Palace Vases
KANGXI PERIOD, AD 1662-1722

Decorated with figures in landscapes, magnificently painted in deep underglaze blue. Of impressive size and superb quality.

Height: 29 ½ inches (75 cm.)

Similar examples: Shanghai Museum and a large vase of similar size but of yenyen form in the Palace Museum, Beijing.

Ex: Private American Collection



15 (one illustrated)



16



17

16. Chinese Blue and White Soft Paste Porcelain Jar

CA: EARLY/ MID-18TH CENTURY

Decorated with the *sanduo* (Three Sacred Fruits), finely painted.

Height: 7 ¾ inches (19.7 cm.)

Related examples: Palace Museum, Beijing
Ex: Private early 20th century American Collection

17. Pair of Chinese Famille Verte Porcelain Bamboo Form Vases and Covers with Porcelain Stands

KANGXI PERIOD, AD 1662-1722

Finely decorated in vibrant enamels.

Height: 10 ¼ inches (26 cm.)

Vases of this type are in important private and museum collections including those of Leonard Gow, J.P. Morgan, and William Bennett.



18



19

18. Fine Chinese Famille Verte Porcelain Bamboo Form Teapot

KANGXI PERIOD, AD 1662-1722

Based upon a classic yixing type- of sectional form imitating bamboo stalks, with petal shaped cover with twig handle.

Finely decorated with roosters and flowers in bright enamels.

Height: 4 ½ inches (11.4 cm.)

Similar examples: the Gow Collection; Taft Collection; historic collection of Augustus the Strong (as the Zwinger Museum, Dresden); and Charlottenburg, Germany.

19. Fine and Rare Chinese Sancai Glazed Biscuit Porcelain Horse and Rider

KANGXI PERIOD, AD 1662-1722

Finely modeled with meticulous detail.

Height: 8 ¾ inches (20.6 cm.)

Ex: Private American Collection
Ex Collection: Henry Price (acquired in 1942 from Frank Partridge & Sons, London).

Similar and related examples may be found in important private and Museum collections including the Metropolitan Museum of Art; Copeland Collection (now at the Peabody Essex Museum), and [former] Goldschmidt Collection, Berlin.



20

**20. Rare Pair of Chinese Glazed Biscuit Porcelain
Recumbent Fu Lions**

KANGXI PERIOD, AD 1662-1722

Supporting vases upon their backs. Forming a true pair, right and left. Beautifully decorated in bright famille verte glazed enamels.

Heights: 7 ¼ inches (18.1 cm.)

A similar pair was in the collection of George Davies (published by Gorner, 1913, Pl. XIX).

**21. Chinese Famille Verte Glazed Biscuit Porcelain
Guanyin and Base**

KANGXI PERIOD, AD 1662-1722

Finely modeled and decorated in deep enamels.

Height: 16 ¾ inches (42.5 cm.)

Similar examples may be found in fine private museum collection including the Taft Museum, Cincinnati; the Salting Collection at the Victoria & Albert Museum, London; and the Conde Collection, Mexico.



22

**22. Fine Chinese Famille Verte Glazed Biscuit Porcelain
Figure of the Daoist Immortal Lu Dongbin**

KANGXI PERIOD, CA: EARLY 18TH CENTURY

Finely modeled in the full round. The figure, posed standing upon a rectangular base. He is dressed in a light green robe, decorated with flowering prunus. Dressed in a light green robe decorated with flowering prunus, and wearing his distinctive Mandarin hat.

Height: 12 ½ inches (31.7 cm.)

Ex: Private American Collection

Similar and related figures: Taft Museum, Cincinnati, and the Rijksmuseum, Holland.



23

23. Chinese Famille Verte Porcelain Rouleau Vase

KANGXI PERIOD, AD 1662-1722

Decorated with a scene from the Chinese classic *Romance of the Three Kingdoms*, an epic that was popular in the Kangxi reign with themes of reverence for the past and loyalty to the ruler (important in the beginning of the Qing dynasty when the Kangxi emperor was proving his worthiness to rule China). The painting is of the finest quality- beautifully executed in deep and vibrant enamels.

Height: 17 inches (43.2 cm.)

Ex: Private Collection

Ex Collection: Edward Chow, a major collector and dealer in England and later Switzerland. His collection was one of the finest assembled outside of China in the 20th century.

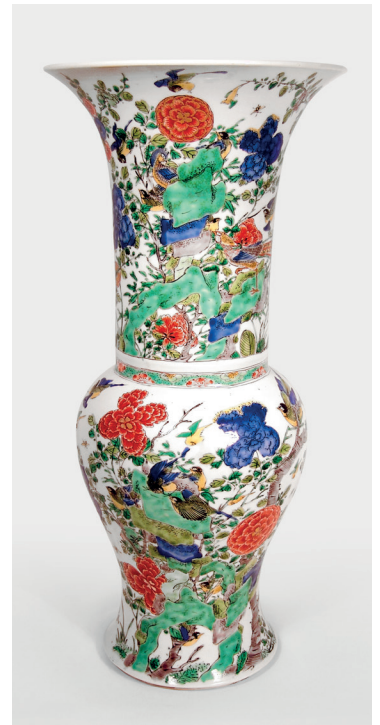
24. Fine Chinese Famille Verte Porcelain Yenyen Vase

KANGXI PERIOD,
AD 1662-1722

Superbly decorated
with flowers and birds
in bright enamels.

Height: 18 inches
(45.7 cm.)

Similar vases of this
quality were formerly
in the collection of
Lawrence Rockefeller.



24

25. Chinese Doucai Glazed Porcelain Vase

KANGXI/
YONGZHENG
PERIOD, CA: EARLY
18TH CENTURY

Finely decorated with
deer, cranes, pine trees,
and landscapes. All,
symbolic of Long Life.

Height: 15 ¼ inches
(38.7 cm.)

With carved wood base.
Ex: Private New York
Collection



25



26

26. Fine Pair of Chinese Imperial Aubergine Glazed Porcelain Bowls

KANGXI PERIOD, AD 1662-1722

Of broad hemispherical shape resting upon a short foot.

The underfoot of each with six character Kangxi marks in underglaze blue and of the period,

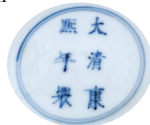
Diameter: 4 ¾ inches (12.1 cm.)

Ex: Private American Collection

Ex: Collection: Vermeer & Griggs Collection

Ex Collection: J.J. Lally

Identical example: Zhuyuetang Collection, *Shimmering Colors*, 2005, No. 159.



26 seal

27. Fine and Very Rare Pair of Chinese Celadon Gourd Shaped Vases

KANGXI PERIOD, AD 1662-1722

Of beautiful form. Each finely carved with floral decoration. The celadon of fine bright tone.

It is extremely rare to encounter vases of this type both in size and fine decoration. We are aware of only a related type with blue and white decoration.

Height: 17 ½ inches (44.5 cm.)

Ex: Private American Collection

Ex: European Collection

28. Chinese Deep Blue Glazed Porcelain Bottle Vase

QIANLONG/ JIAQING PERIOD, CA: LATE 18TH/ EARLY 19TH CENTURY

Finely modeled and of beautiful form, with cylindrical neck and ovoid body, resting upon a short pedestal foot with recessed underfoot. Glazed overall in a beautiful deep and vibrant cobalt blue; the underfoot glazed white.

Height: 18 ½ inches (47 cm.)

Ex Collection: Joseph Yves Limantour (acquired in the mid-19th century)



27



28



29



30

29. Chinese Underglaze Blue and Red Porcelain Bowl
KANGXI PERIOD, CA: LATE 17TH CENTURY
Decorated with peaches and leaves in a combination of colors.
Diameter: 7 $\frac{5}{8}$ inches (19.3 cm.)
Ex: Private New York Collection

30. Chinese Celadon and Underglaze Red Porcelain Bottle Vase
18TH/ EARLY 19TH CENTURY
Decorated with reserves bats and sacred peaches in underglaze copper red.
Height: 9 $\frac{3}{4}$ inches (24.7 cm.)
Ex: Private American Collection



31



32

31. Rare Chinese Famille Rose Quadrangular Vase
YONGZHENG PERIOD, AD 1723-1735
Decorated with landscape designs on each side. A very rare and classically Chinese subject for this type of vase that was likely intended for export.
Height: 12 inches (30.5 cm.)
32. Pair of Chinese Famille Rose Porcelain Plates
CA: MID-18TH CENTURY
Decorated with and Immortal Lady riding upon a mythical animal.
Diameter: 9 inches (22.8 cm.)
An almost identical pair is illustrated by Williamson in The Book of Famille Rose, 1927.



33

33. Superb Chinese Famille Rose Porcelain Vase and Cover

YONGZHENG PERIOD, AD 1723-1735

Decorated with roosters, chicken, and chicks amidst rockery and large flowering plants. All painted in the most superb quality in vibrant enamels.

Height: 25 ½ inches (64.8 cm.)

Ex: Private Spanish Collection

A very similar example is illustrated by Williamson, *The Book of Famille Rose*, 1927, Pl. LIV from the Hugh Morrison Collection.

34. Fine Pair of Chinese Armorial Porcelain Plates

CA: 1736

Decorated with the Arms of De la Bistratte of Anvers and the Proli family (of Milan and Brabant).

Diameter: 9 inches (22.8 cm.)

Another plate from the service illustrated and described by Jorg in *Chine de Commande*, Chinese Export Porcelain from the Royal Museum of Art and History in Brussels, 1989, No. 96. One with old collector label in French dated to March 27, 1886.



34



36

35. Pair of Chinese Armorial Porcelain Plates

CA: 1740

Decorated with the Arms of Knyff (of Antwerp, Brussels).

Finely painted in bright famille rose and oxidized silver enamels; and fine gilding. The flanged rims, with tied trellises in gilt and armorial elements in famille rose.

Diameter: 9 inches (22.8 cm.)

36. Unusual Canton Enamel Tray

QIANLONG PERIOD, CA: MID-18TH CENTURY

Decorated with a landscape finely painted in famille rose enamels.

The borders decorated with archaic dragon-like designs, and the underfoot, with fungus for good luck and wishes that all should be as you wish.

Length: 12 ¼ inches (31.1 cm.)



37

37. Fine Canton Enamel Wine Pot

CA: MID-18TH CENTURY

Beautifully decorated with floral reserves set against an intricate diaper ground.

The decoration is similar to that found on porcelain from the period.

Height: 7 ¼ inches (18.4 cm.)

38. Very Rare and Fine Blanc de Chine Porcelain Tree with Figures

CA: LATE 18TH/ EARLY 19TH CENTURY

Meticulously modeled with branches and leaves; with removable seated Sage at one side; and a Child with large bird and deer on the other. The rock revealing a hidden animal form of a lion. A remarkable work, masterfully crafted.

Height: 22 inches (55.8 cm.)

Ex: Private American Collection

Ex: Collection: J.T. Dorrance



38

39. Fine Chinese Export Silver Tray

CA: LATE 19TH CENTURY

Decorated with scenes of scholars in gardens- and boys gathering mulberry leaves. The scenes based upon the Plowing and Weaving paintings and woodblock prints originally commissioned by the Kangxi Emperor.

Maker: Luenwo

Length: 22 ¾ inches (57.7 cm.)

40. Unusual and Rare Chinese Export Silver Pickle Set

CA: LAST QUARTER 19TH CENTURY

Comprised of a silver frame, glass jars, and two removable forks. A rare and otherwise unrecorded form.

Maker: Tuck Chang

Height: 10 ½ inches (26.7 cm.)



40

41. Chinese Carved Zitan Brushpot

CA: 19TH CENTURY

Well carved and finely decorated overall on the exterior with flowers and tendrils, the lip carved as overlapping petals.

Height: 5 inches (12.7 cm.)

Ex: Private American Collection

42. Chinese Carved Wood Brush and Cover

18TH/ 19TH CENTURY

Decorated with Imperial Five-Clawed Lung Water dragons above seawaves.

Length: 8 ¾ inches (22.5 cm.)

Ex: Vanessa Holden, Singapore, 2000

43. Chinese Yixing Teapot

CA: 18TH CENTURY

Of fine and elegant form. With compressed ovular body resting upon three ball feet.

Underside inscribed with the signature: Hui Mengqen

Height: 3 ¼ inches (8.2 cm.)

Ex: Sydney Moss, 1978

44. Very Rare Chinese Langyao Porcelain Water Coupe

KANGXI/ EARLY 18TH CENTURY

Of "apple" form with incurved neck. Glazed overall in a deep sang de boeuf red glaze.

It is rare to encounter this form with this glaze that is better known in peachbloom.

Height: 2 ½ inches (6.3 cm.)

Diameter: 4 ¼ inches (10.8 cm.)

Ex Collection: Ira and Nancy Koger

Illustrated and described by John Ayers: *The Koger Collection, Chinese Ceramics*, 1985.

45. Chinese Carved Jade Vase

MING DYNASTY, CA: 17TH CENTURY

In the form of a flowering branch of prunus, of variegated color.

Height: 6 ¾ inches (17.1 cm.)

Ex Collection: Winston Guest

Similar example: Palace Museum, Beijing



RALPH M. CHAIT GALLERIES INC.

16 East 52nd Street
10th Floor
New York, NY 10022

Tel: 212-397-2818 Fax: 212-319-0471

info@rmchaitgal.net
www.rmchait.com